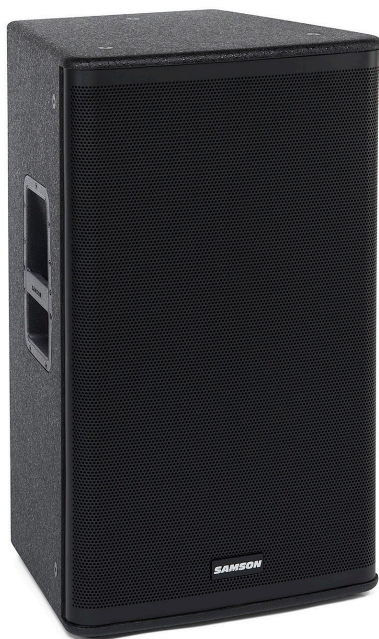


# RSX115

## 2-Way Passive Loudspeaker



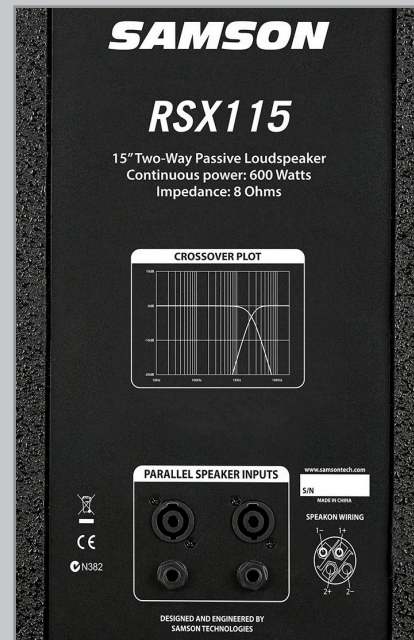
Samson's RSX115 is a high performance, 2-way passive loudspeaker ideal for sound professionals and performers looking for serious output and precision sound quality from their PA setup. Perfect for gigging musicians, houses of worship and performance venues of varying sizes, the RSX115 offers professional sound in a versatile cabinet that is ideal for both road and installation applications.

Handling 600 watts AES and 2,400 watts Peak of power at 8 ohms, the RSX115 is well-suited for large PA systems. It features a heavy-duty, 15" low-frequency driver with 3" voice coil for an extended low frequency response of 50Hz–20kHz ( $\pm 3$ dB). The speaker's detailed high frequency reproduction is created by a Celestion 1.75" PETP compression driver mounted in a 60° x 90° horn with a 1" exit. The result is brilliant, crystal-clear audio with precision control of the sound field. The RSX115 has dual Speakon® and 1/4" phone speaker inputs wired in parallel. This enables you to expand your PA system by directly connecting an extension speaker to the RSX115.

The RSX115's trapezoidal enclosure is constructed of solid 9-layer plywood and finished with a durable black, textured paint. Its black powder-coated, perforated steel grill ensures maximum protection against wear and tear. The speaker's rugged, roadworthy design also features a 1 3/8" pole mount receptacle and two integrated carry handles, making transportation of the cabinet a breeze. And for situations that require permanent speaker installation, the RSX115 is furnished with twelve M10 (10mm) fly points.

### FEATURES

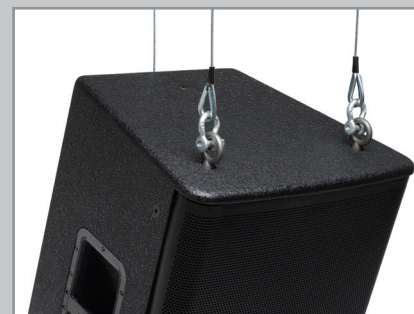
- 2-way passive loudspeaker
- 15" low-frequency driver with 3" voice coil
- Celestion 1.75" PETP compression driver
- 60° x 90° horn with 1" exit
- 600 watts AES, 2,400 watts Peak power handling at 8 ohms
- 50Hz–20kHz ( $\pm 3$ dB) frequency response
- Dual Speakon® and 1/4" phone parallel speaker inputs
- 1 3/8" pole mount receptacle
- Twelve M10 (10mm) fly points
- Integrated carry handles
- Trapezoidal, 9-layer plywood cabinet construction
- Durable black, textured paint finish



Back panel



Integrated carry handles



Twelve M10 fly points

### RSX115

UPC .....	809164015390
SKU .....	SARSX115
HEIGHT .....	32"
WIDTH .....	20.25"
DEPTH .....	18.5"
WEIGHT .....	65lb
MASTER CARTON QUANTITY: 1	

\* DIMENSIONS AND WEIGHT BOXED

**SAMSON®**